

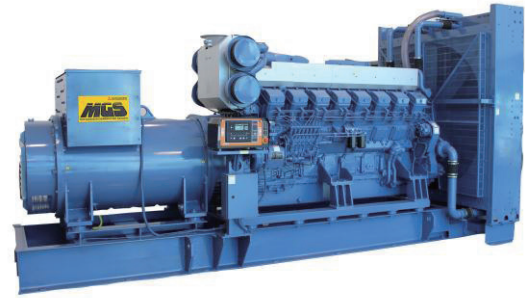
MITSUBISHI MGS SERIES

DIESEL GENERATOR SET
50Hz/1500 rpm/380V



MGS2700B

POWER RATING (0.8 P.F.)	MODEL CODE
STAND-BY 2500 kVA	5S-L51V9
PRIME 2250 kVA	5P-L51V9



The photograph is MGS2000B

Voltage Variation

- Standard Voltage 3Phase 4 Wires
380V
- Voltages Available 3Phase 4 Wires
380, 400, 415 and 440V

Note: Outputs for optional voltages may differ from standard output mentioned above.

CONDITIONS & DEFINITIONS

Stand-by: Code: S

Applicable for supplying emergency power at varying load in the event of the normal utility power interruption.

Fuel stop power in accordance with ISO15550, ISO3046/1, JISB8002-1, DIN6271 and BS5514.

Overload: not allowed

Prime: Code: P

Applicable for supplying emergency power at varying load in the event of normal utility power interruption. + 10% overload in accordance with ISO3046/1. Overload power in accordance with ISO15550, ISO3046/1, JIS8002-1, DIN6271 and BS5514.

Conditions:

Engine ratings are based on SAE J1349 standard conditions and also apply at ISO3046/1, DIN6271 & BS5514 standard conditions.

Fuel rates: based on ASTM D975, BS2869 and on fuel oil of 35° API (16°C or 60° F) gravity having a LHV of 42,780 kJ/kg (18,390 Btu/lb.) when used at 29°C (85° F) and weighing 838.9 g/liter (7.001lbs./U.S. gal.).

Note: * For conditions of prime power (P.R.P.) and additional rating requirements, please consult your nearest Mitsubishi MGS dealer.

DIMENSION (Reference Data)

Overall dimensions	L : Length	mm	6319
	W : Width	mm	2849
	H : Height	mm	3362
Total Weight (Dry)		kg	17900
Total Weight (Wet)		kg	18720

MITSUBISHI MGS SERIES

DIESEL GENERATOR SET
MGS2700B



MGS SERIES DIESEL ENGINE: MITSUBISHI S16R2-PTAW

V-16, 4 stroke-cycle water-cooled, turbocharged and air-to-air cooling system

ENGINE SPECIFICATIONS & TECHNICAL DATA

Bore	mm	170
Stroke	mm	220
Displacement	L	79.9
Piston speed	m/sec.	11.0
Compression ratio		14.0
Lubricating oil capacity	L	290
Coolant capacity without radiator	L	157
Coolant pump external resistance	m water	5.0
Coolant pump flow rate	L/min	1650
Cooling fan airflow rate	m ³ /min	2760
Cooling fan air flow restriction	kPa	0.1
Ambient air temperature	°C	40
Allowable exhaust back pressure	kPa	6.0
Exhaust flange size (internal diameter)	mm	350

ENGINE OPERATING DATA

		STAND-BY	PRIME
		2500 kVA	2250 kVA
Gross Engine Power*	kWm	2110	1903
Brake mean effective pressure	MPa	2.17	1.96
Regenerative absorption	kW	152	152
Noise Level at 1 m (excluding: intake, exhaust & fan)	dB(A)	115	114
Fuel consumption load 100%*	L/hr.	512	460
Fuel consumption load 75%*	L/hr.	401	362
Combustion air inlet flow rate	m ³ /min	175	158
Exhaust gas flow rate	m ³ /min	463	416
Exhaust gas temperature	°C	530	520
Heat rejection to coolant	kW	826	738
Heat rejection to exhaust	kW	1474	1299
Heat rejection to atmosphere from engine	kW	160	143
Heat rejection to atmosphere from generator	kW	103	93

* WITH FAN basis.

Deration for engine

Note: Please consult with your nearest Mitsubishi MGS dealer

ENGINE STANDARD EQUIPMENT

Aftercooler
Turbocharger filter
Structure steel base
Crankcase breather
Charging alternator
Lubricating oil cooler
Fuel filters, full flow paper element
Fuel transfer pump, gear driven, plunger type
Electronic type governor
Jacket water heater
Jacket water pump, gear driven
Lubricating oil filter, full flow paper element
Lubricating oil pump, gear driven
Exhaust dry manifold
Radiator, blower fan, fan drive
Manual shutoff
24V DC electric starting motor

MITSUBISHI MGS SERIES

DIESEL GENERATOR SET
MGS2700B



MGS SERIES 7310 GENERATOR CONTROL PANEL

Type & Design

MGS standard 7310 programmable microprocessor control-automatic start/stop panel, generator breaker control, indicating the operational status and fault conditions; automatically shutting down the engine and indicating the engine failure by means of LCD display and LEDs on the front panel.

Controls & Monitoring

- ◆ Mode selection & start engine button with interlock key switch system
- ◆ Menu navigation button
- ◆ LCD display for: AC amperage-each phase and earth current, AC voltage-each phase and neutral, Frequency Hz, Operation hours run, Lub. Oil pressure, Lub. Oil temperature, Cooling water temperature, Generator Load kW/kVA/kVar, Generator Load kWh/kVAh/kVarh
- ◆ Operation status LED indicators
- ◆ CB control buttons
- ◆ Mute/Lamp test button
- ◆ Voltage adjuster
- ◆ Speed adjuster
- ◆ Emergency stop pushbutton
- ◆ Provided 5 outputs for status as standard equipment (Programmable 8 outputs available as option)

Safety Shutdown Protection and LED Indicators

High engine temperature, Low oil pressure, Fail to start, Generator Over Speed/Frequency, Generator Under Speed/Frequency
Generator High Voltage, Generator Low Voltage, Oil pressure sender circuit, Loss of Speed signal, Emergency stop,

Mounting

Fabricated cubicle mounted on individual bracket with anti-vibration isolator

Electrical Design

In accordance with BS EN 60950 Low Voltage Directive, BS EN 61006-2 and 61006-4 EMC Directive. The optional interface can provide real time diagnostic facilities.

Generator Control Panel Description

- 3 position operation mode control key switch (ACTIVE, PANEL LOCK, STOP/RESET)
- Manual button
- Auto button
- CB open button (Manual only)
- CB close button (Manual only)
- Start engine button (Manual only)
- LCD display accessed by scroll pushbutton
 - Generator volts L1-N, L2-N, L3-N
 - Generator volts L1-L2, L2-L3, L3-L1
 - Generator amps L1, L2, L3
 - Generator Earth Current
 - Generator Frequency Hz
 - Engine speed RPM
 - Engine oil pressure (PSI & Bar)
 - Engine cooling water temperature (°C & °F)
 - Engine Lub. Oil temperature (°C & °F)
 - Battery volts
 - Engine hours run
 - Generator Load kW, kVA, kVar
 - Generator Load kWh, kVAh, kVarh
 - Power Factor
 - Generator Phase Sequence
- Visual indicators on LCD display
 - Shutdown alarm
 - Warning alarm
 - High coolant temperature
 - High Lub. Oil temperature
 - Low oil pressure
 - Charge fail
 - Over-speed
 - Under-speed
 - Electrical trip
 - Fail to stop
 - Generator high current
 - Over voltage (AC)
 - Under voltage (AC)
 - Over voltage (DC)
 - Under voltage (DC)
 - Auxiliary indication
 - Auxiliary alarm (warning or shutdown)
 - Common alarm
 - Over frequency
 - Under frequency
- Visual indication alarm and automatically shutdown
 - High engine temperature
 - Low oil pressure
 - Fail to start
 - Over-speed
 - High voltage
 - Low voltage
 - Over frequency
 - Under frequency
 - Oil pressure sender open circuit
 - Loss of speed signal
 - High Crankcase internal pressure (MGS-C Continuous only)
 - Emergency Stop
- Operation status indicated by LED
 - Remote start present
 - Generator ready
 - Lubrication oil filter clogged
 - Electrical trip
- Pre-Programmed Starting Unit
 - Automatic start/stop sequence timing and delay systems configured via MS-Windows based software.

MITSUBISHI MGS SERIES

DIESEL GENERATOR SET
MGS2700B



MGS SERIES AC GENERATOR MODEL: MG-L51V9

Type & Design

MGS original design, single bearing, 4 pole, screen protected, selfexciting, self regulating and brushless with fully connected damper windings, salient pole rotors, A.C. exciter and rotating rectifier unit. Direct coupled to engine and regreaseable bearing, direct drive centrifugal blower.

Enclosure: Drip-proof IP23

Winding System

Standard 6 wire winding provides 3 phase voltage. All windings are impregnated in vacuum pressure impregnated with a exoxide resin.

Overspeed capability: 125% for 2 minutes

Insulation: Class 'H' of IEC

Temperature rise: Class 'H'

Voltage Regulator

Fully sealed, 3 phase RMS sensing AVR with built-in protection against sustained over-excitation. This de-excites the generator after a minimum of 5 seconds.

Voltage regulation: Less than +/- 0.5% from no load to full load at any power factor between 0.8 lagging and 1.0 allowing for a 4% engine speed variation

Voltage adjustment: +/- 6%

Wave form: Less than 5% deviation

AREP and PMI

Electrically isolated from the main alternator stator windings powers AVR - sustaining approx. 300% of short circuit current at the AC generator output terminals for not more than 10 seconds by means of excitation voltage via AVR

Electrical Design

In accordance with, NEMA MG1-22, IEC60034-1, CSA, and ISO8528/3.

Telephone Influence Factor (TIF): Less than 50

Telephone Harmonic factor (THF): Less than 2.5%

Radio interference: Suppression is in line with the provision of VDE Class G and N

Gen Set Option Features

- ENGINE
 - Air Cleaner, paper element dry type
 - Battery Kit
 - Battery Charger
 - Anchor Bolts
- FUEL
 - Fuel Day Service Tank
- LUBRICATION
 - Lub. Oil Priming Pump
- EXHAUST
 - Exhaust Silencer
 - Exhaust Flexible Pipe
- GENERATOR
 - Space Heater
 - 3 phase Sensing Auto Voltage Regulator
 - Power Factor Regulator
- CONTROL PANEL
 - Diesel Generator Integrated Communication Synthesizer (DGICS-MII)
 - Auxiliary Control Panel
 - Remote Monitor Interface
- SWITCHGEAR
 - Circuit Breaker MCCB & ACB
 - Reverse Power Relay



Power Systems Engine Section, Engine Sales Department
16-5, KONAN 2-CHOME, MINATO-KU, TOKYO 108-8215 JAPAN
TEL: 81-3-6716-4771 FAX: 81-3-6716-5854

Mitsubishi Heavy Industries, Ltd. serves for the customers with improved products continually.

Therefore specification and some materials will be changed without notice.

The International System of units (SI) is used in this publication.

